

# Efficient Internet Based Parking Validation

*Certified for Central Parking System Sites*

**Cost Effective**

**Increases Traffic Flow Efficiency**

**Instant Validation**



Increase YOUR Customer Satisfaction & Retention with This Simplified Product Offering

**Ideal for Parking Structures & Kiosk-Type Environments**  
*Restaurants, Movie Theaters, Hotels, Etc.*

No Specialized Equipment Required

Perfect Solution to Problematic Vouchers & Hole-Punch Machines

Users Can Conveniently Use Any Electronic Device with Internet Access  
*Such as, smart phone, tablet, laptop, desktop*

Allows Merchants to:  
Effectively Manage Employees  
Accurately Track Usage  
Generate Validation Reports

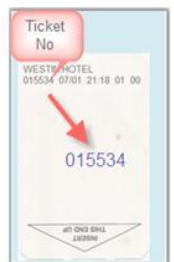
Merchant Ticket Validation Report					
Date From:	5/1/2010	Joes Pizza		Date Printed: 5/6/2010	
Ticket Number	Issue Time	Validated By	Scan Code	Date Validated	
1001	5/1/2010 1:03:10PM	jim jones	J01	5/6/2010	4:06:41PM
1002	5/2/2010 10:11:12AM	jim jones	J01	5/6/2010	4:05:40PM
1003	5/2/2010 10:21:20PM	jim jones	J01	5/6/2010	4:05:48PM
2001	5/1/2010 1:03:10PM	Greg Smith	J01	5/6/2010	10:56:58AM
2004	5/2/2010 11:12:13AM	Greg Smith	J01	5/6/2010	12:29:25PM
4004	5/2/2010 11:12:13AM	jim jones	J01	5/5/2010	4:55:07PM
4005	5/2/2010 12:13:14PM	jim jones	J01	5/4/2010	9:38:02PM

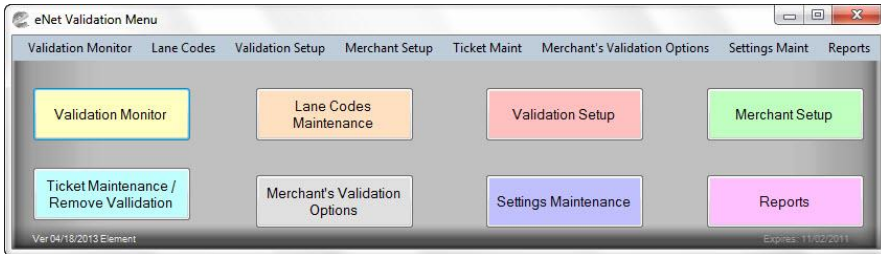
Experience a Demo  
[www.enetvalidation.com](http://www.enetvalidation.com)

Enables Operators to:  
Assign Roles  
Easily Set-Up Merchants  
Run Full Reports for Selected Time Periods  
Track Prepaid Merchant Billing

**Ticket Validation  
In 3 Easy Steps**

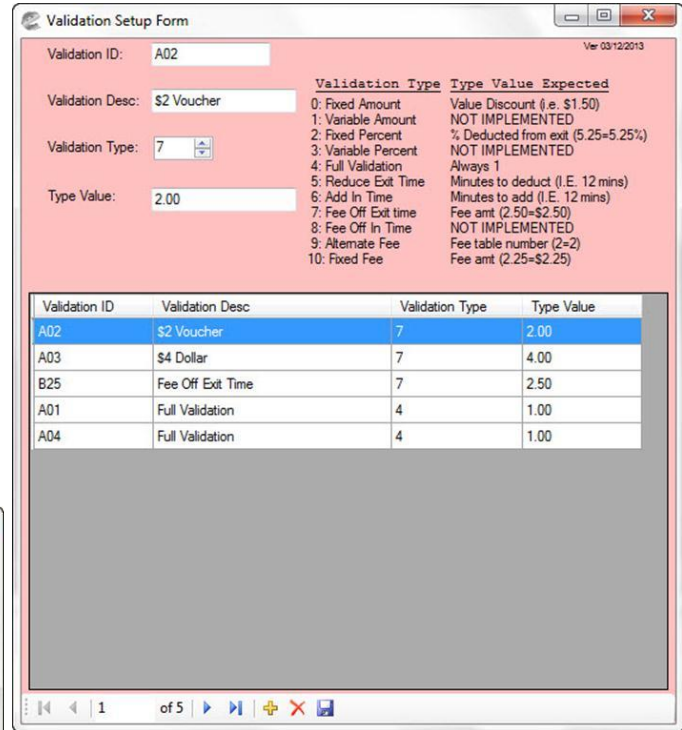
1. Log In
2. Enter Ticket Number
3. Validate





## Validation Setup Form

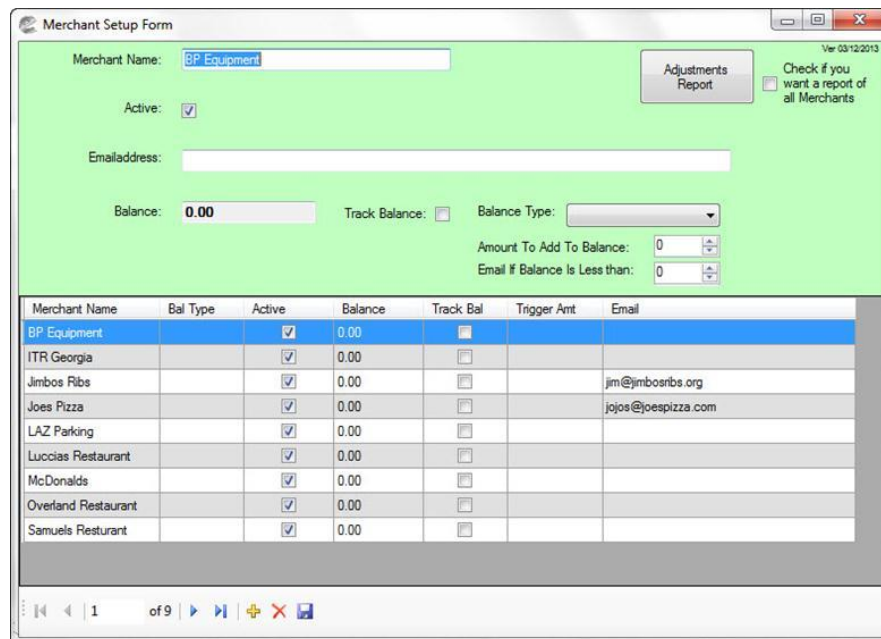
Allows the user to create unique validation ID's are used to identify the type of validation to apply to a ticket



## Merchant Setup Form

Where user creates, updates, or deletes merchants

Option for email notifications, and to create & track prepaid account balances



## Reports

Merchant Ticket

Operator Ticket

Merchant Validation  
Accounts Assigned

Validation Accounts  
Assigned

